

Canlines LTD

Eazi Fount Chamber System



Sealed chambers bespoke for the can industry.

Compatible with all CD2 and Reverse units.

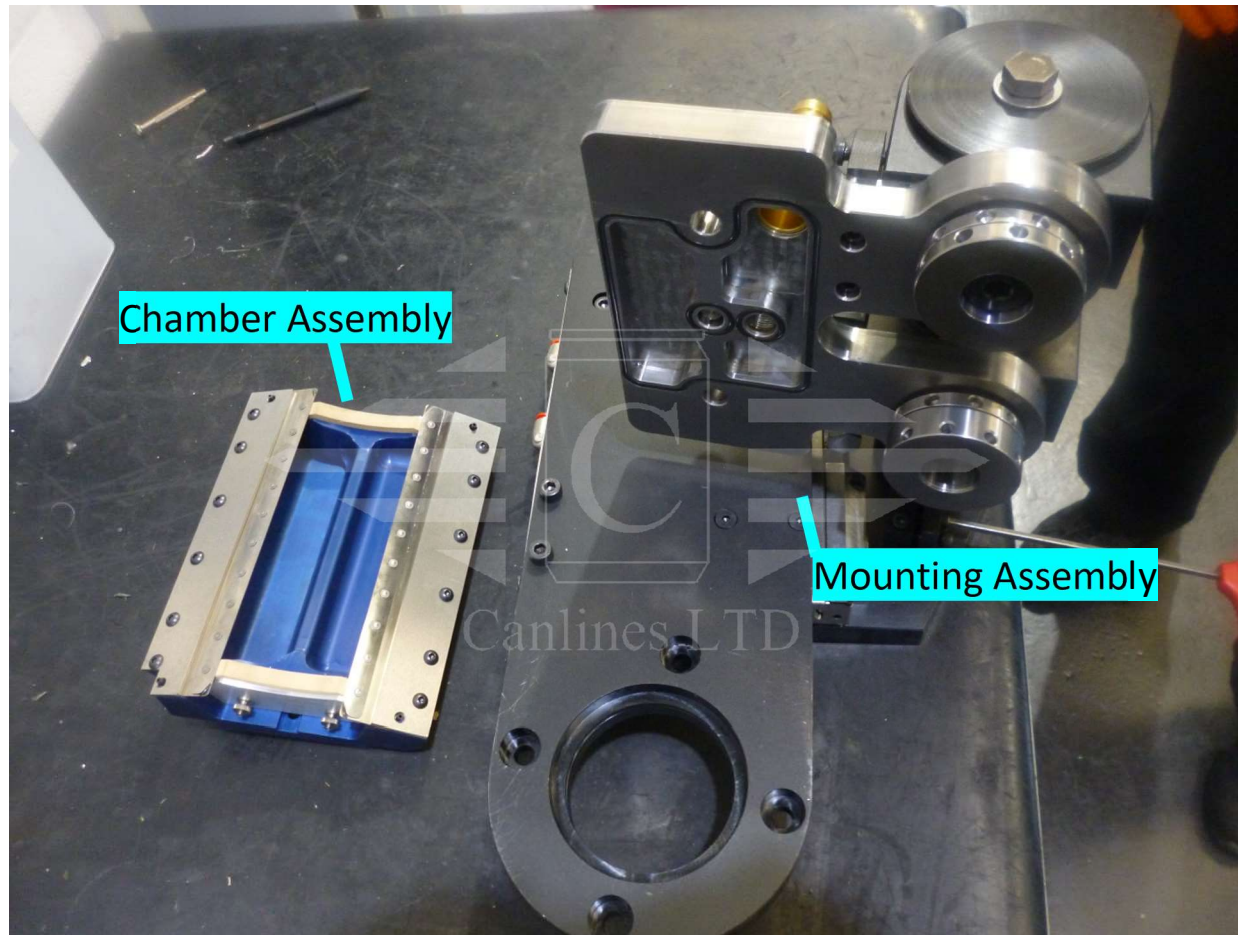
Easy to fit, maintain and remove.

+44 151 420 7000

canlines.co.uk

info@canlines.co.uk

Canlines LTD



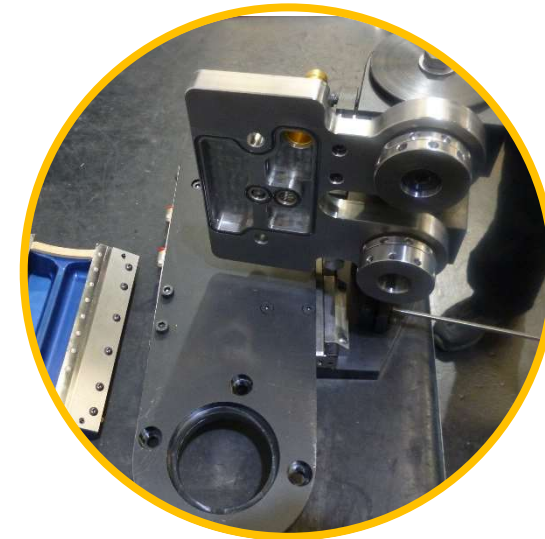
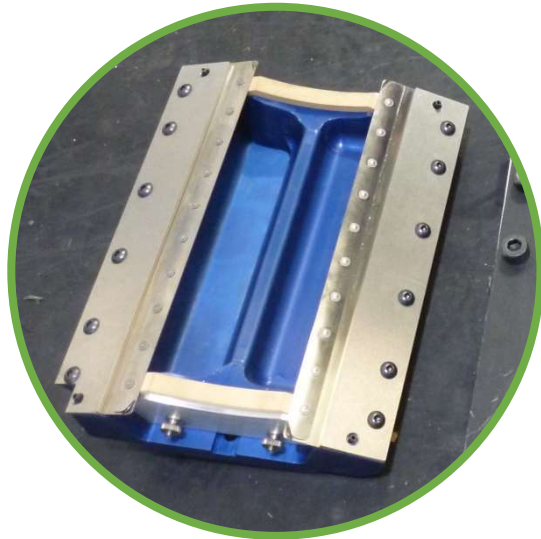
+44 151 420 7000

canlines.co.uk

info@canlines.co.uk

Canlines LTD

Description	Can Size (cl) / Unit Type	Canlines Part Number	Qty per Unit
Chamber Assembly	33cl	CAN-FOUNT-1015A	1
	50cl	CAN-FOUNT-1016A	1
	56.8cl	CAN-FOUNT-568A	1
Mounting Assembly	CD2	CAN-FOUNT-1117A	1
	Reverse	CAN-FOUNT-1116A	1

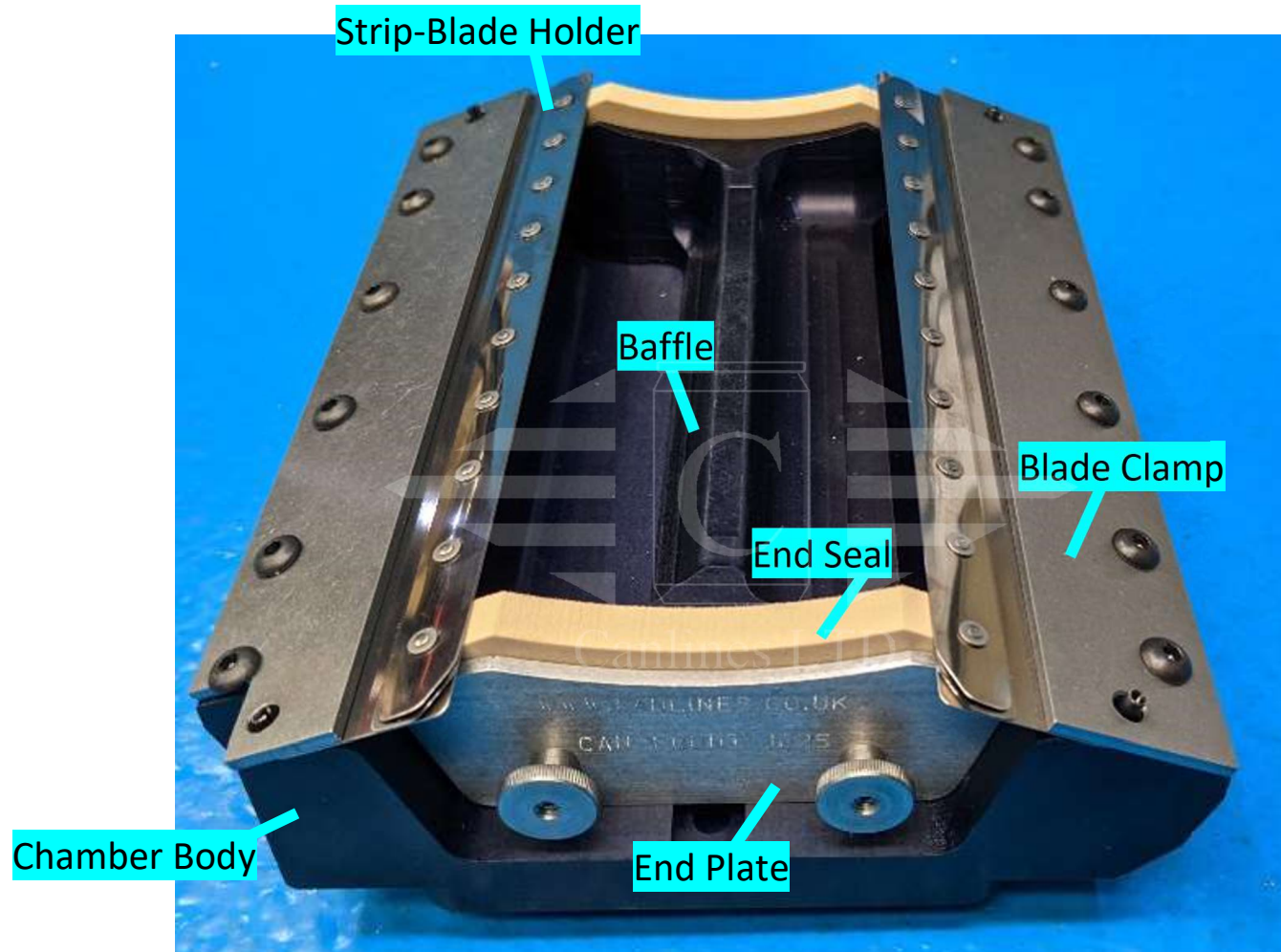


+44 151 420 7000

canlines.co.uk

info@canlines.co.uk

Canlines LTD



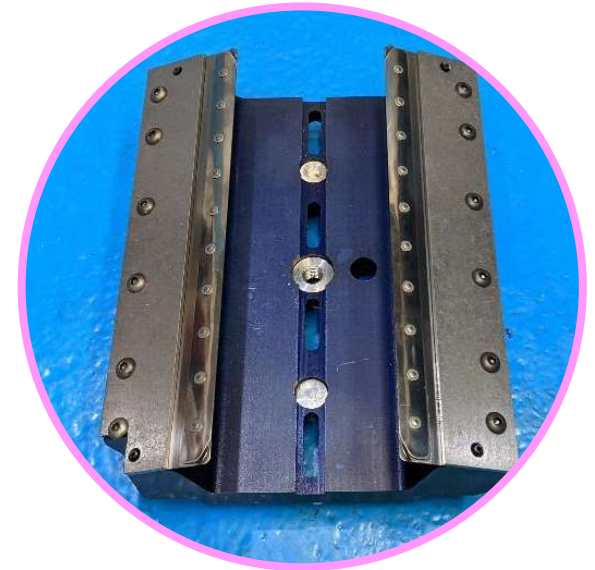
+44 151 420 7000

canlines.co.uk

info@canlines.co.uk

Canlines LTD

Description	Can Size (cl)	Canlines Part Number	Qty per Unit
Body	33	CAN-FOUNT-1015	1
	50	CAN-FOUNT-1016	
	56.8	CAN-FOUNT-568	
Blade Clamp	33	CAN-FOUNT-1018	2
	50	CAN-FOUNT-2055	
	56.8	CAN-FOUNT-2568	
Strip-Blade Holder	33	HSW 3030 0180	2
	50	HSW 3030 0210	
	56.8	HSW 3030 0235	



Canlines LTD

Description	Can Size (cl)	Canlines Part Number	Qty per Unit
Baffle	33	CAN-FOUNT-1051	1
	50	CAN-FOUNT-1050	
	56.8	CAN-FOUNT-568B*	
End Seal	Universal	21.0734-6*	2
End Seal Lubrication Grease	Universal	CAN-FOUNT-GREASE	Sold in 100ml bottles
End Plate	Universal	CAN-FOUNT-1025*	2



*This part is standard, however some customers may have modified versions at their request. Please check before ordering.

We can also provide Eazi Fount for 'sleek' can sizes, though we ask you to give us the height & diameter of the can ahead of placing an order.